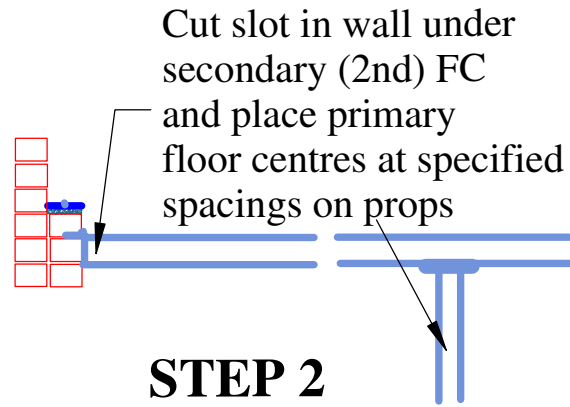
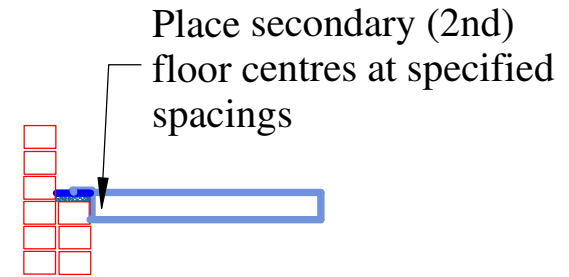


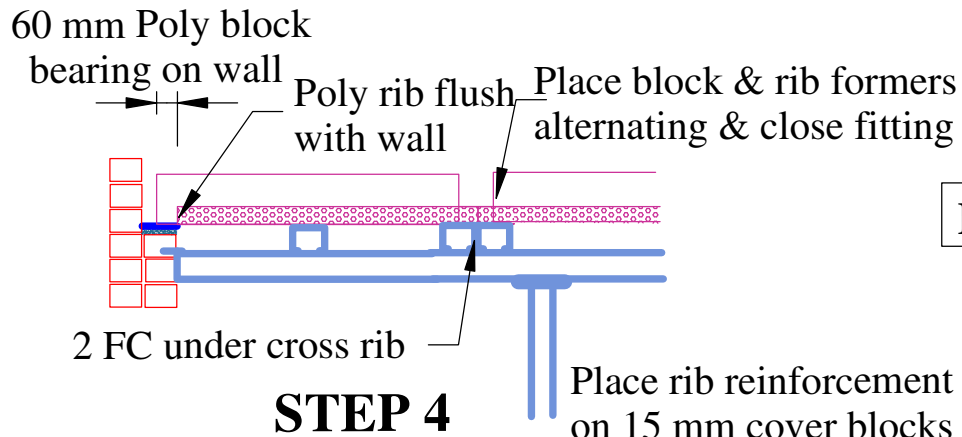
STEP 1



STEP 2

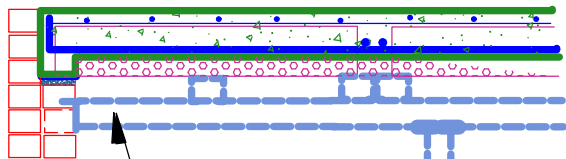


STEP 3

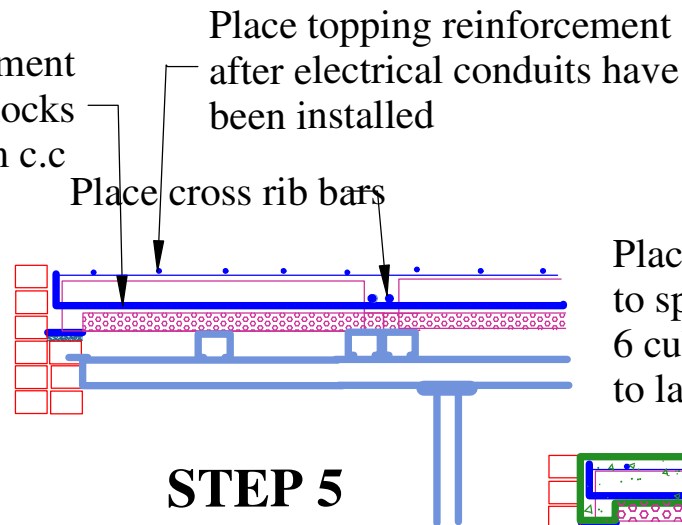


STEP 4

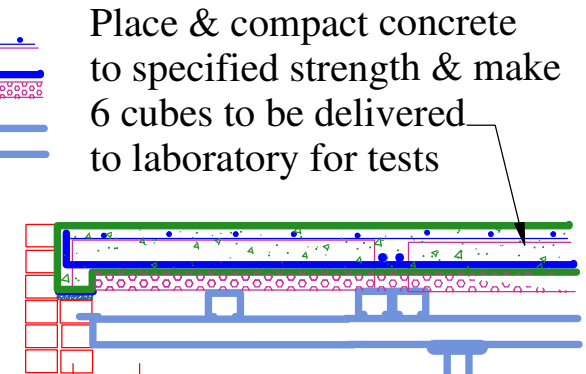
POLYFORM ERECTION PROCEDURE DRG PE



STEP 7



STEP 5



STEP 6

If 35 MPa concrete was used request laboratory to crush 1 cube after 5 days of concreting [10 days for 25 MPa]. If this achieves min 20 MPa crush further 2 cubes. If successful notify Eng. before removing temporary supports. If not, wait a further 1 or 2 days before crushing the 2 cubes. 3 cubes to be crushed @ 28 days and results sent to Eng. Apply desired ceiling finish as per form FIN